

# RESPIRATORY VIRUS SURVEILLANCE REPORT

Week Ending January 6, 2018

Wisconsin Department of Health Services | Division of Public Health

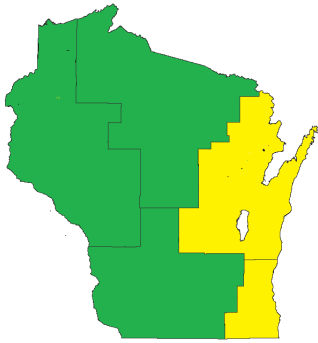
Bureau of Communicable Diseases | Communicable Diseases Epidemiology Section

<https://www.dhs.wisconsin.gov/dph/bcd.htm> | [dhsdphbcd@dhs.wi.gov](mailto:dhsdphbcd@dhs.wi.gov)



# INFLUENZA LIKE ILLNESS (ILI) ACTIVITY

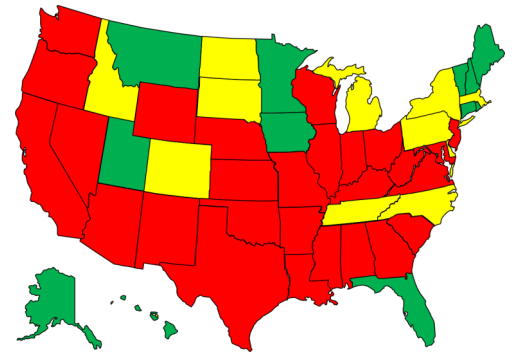
STATE OF WISCONSIN



REGION V OF US  
(WI, MN, IL, MI, OH, IN)



UNITED STATES



● ILI: HIGH LEVELS    ● ILI: MODERATE LEVELS    ● ILI: BELOW BASELINE    ● ILI: INSUFFICIENT DATA

## AT-A-GLANCE:

- [Weekly Respiratory Report Description](#)
- **Predominant Virus of the Week:**  
Influenza A/H3N2

## CURRENT ALERTS:

- Influenza activity continues to increase statewide. 585 flu-associated hospitalizations were reported this week. RSV activity continues to be high statewide.

## INFLUENZA-ASSOCIATED PEDIATRIC DEATHS REPORTED:

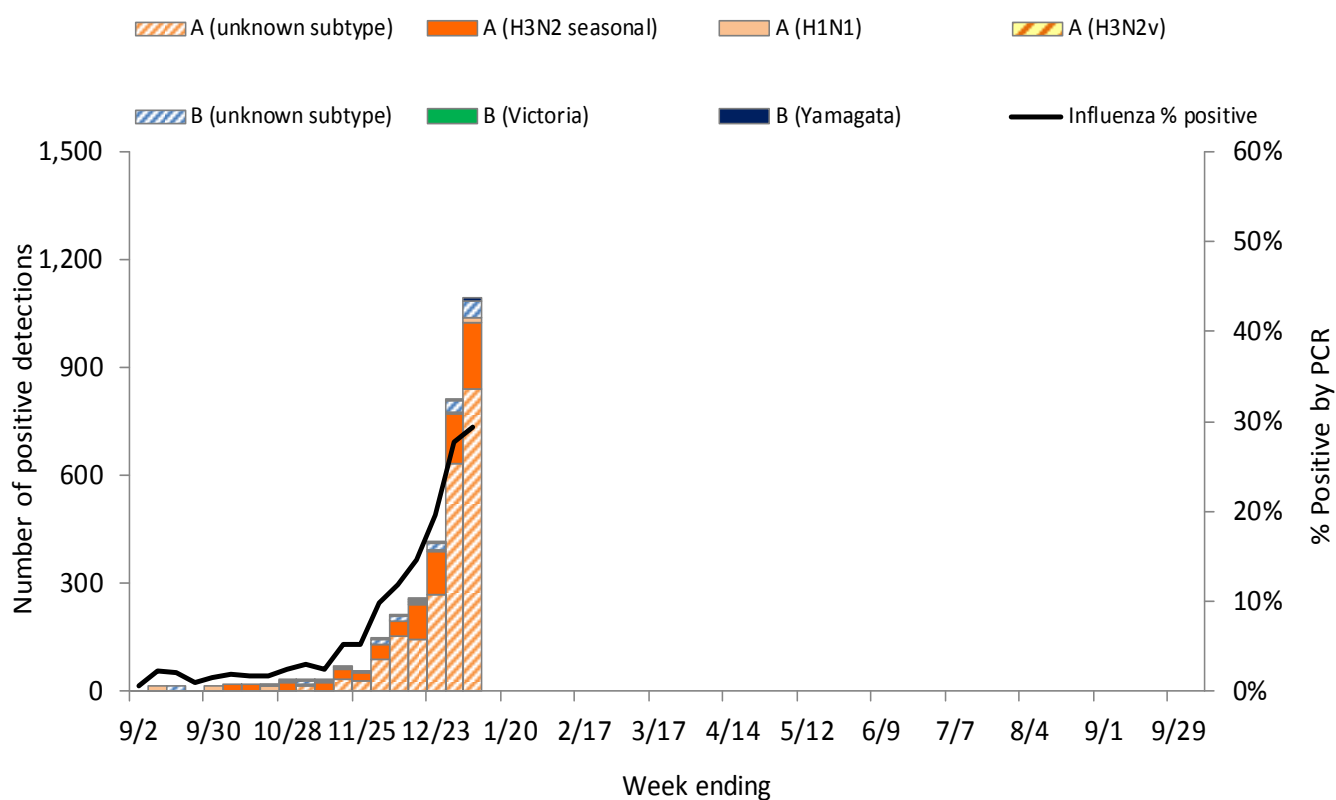
	<u>Week 1 (2018)</u>	<u>October 1, 2017 to present</u>
Wisconsin	0	0
Nationwide	7	20

For National US influenza surveillance statistics visit: <http://www.cdc.gov/flu/weekly/>



# WISCONSIN LABORATORY SURVEILLANCE FOR RESPIRATORY VIRUSES BY PCR

## Wisconsin positive influenza results and subtypes by PCR

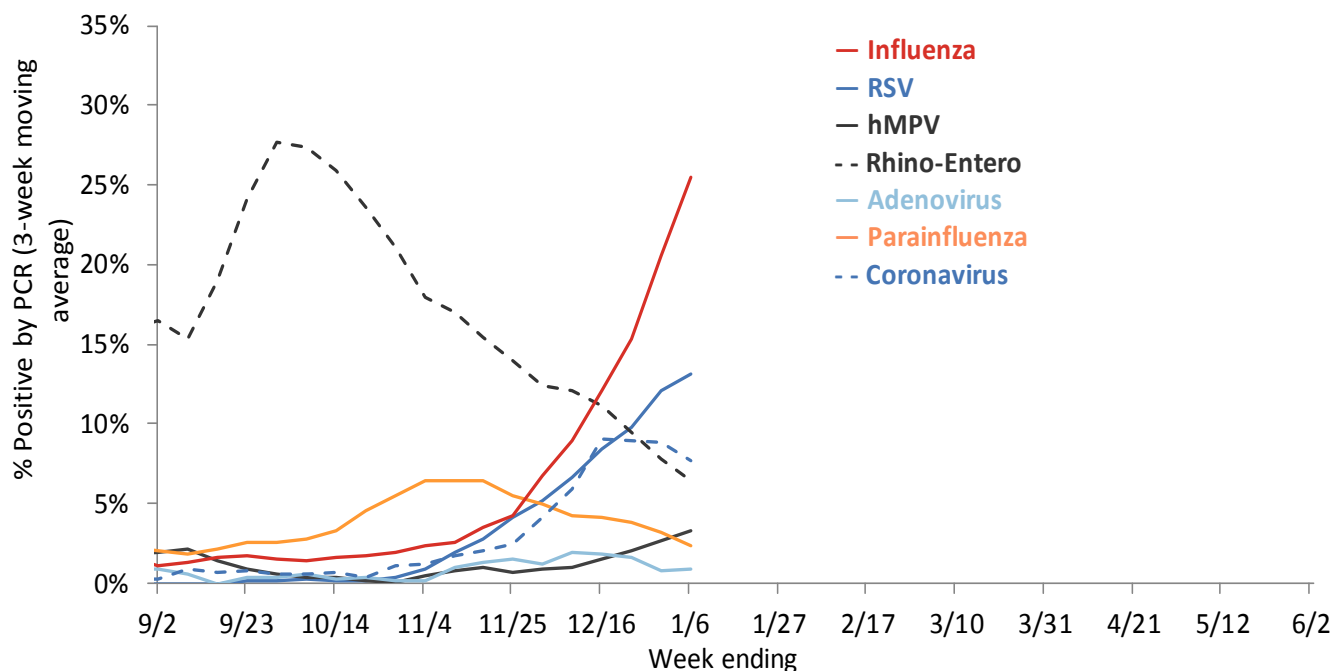


## Cumulative number of positive influenza PCR tests by subtype September 3, 2017 to present

	Influenza A: 94%			Influenza B: 6%			Total
	A (2009 H1N1)	A (H3N2)	A (Unknown)	B (Victoria)	B (Yamagata)	B (Unknown)	
<b>Total positive (n)</b>	28	765	2213	3	34	153	<b>3196</b>
<b>% of total positive</b>	1%	24%	69%	0%	1%	5%	<b>100%</b>

# WISCONSIN LABORATORY SURVEILLANCE FOR RESPIRATORY VIRUSES BY PCR

Trends in respiratory virus activity by PCR



Week ending on January 6, 2018

Respiratory virus	Tested	Positive (n)	Positive (%)	Influenza A			Influenza B		
				H3N2	2009 H1N1	Unknown	Victoria	Yamagata	Unknown
Influenza	3713	1092	29.4%	186	12	836	0	8	50

Respiratory virus	Tested	Positive (n)	Positive (%)	Parainfluenza 1	Parainfluenza 2	Parainfluenza 3	Parainfluenza 4
Parainfluenza	993	10	1.0%	9	0	0	1

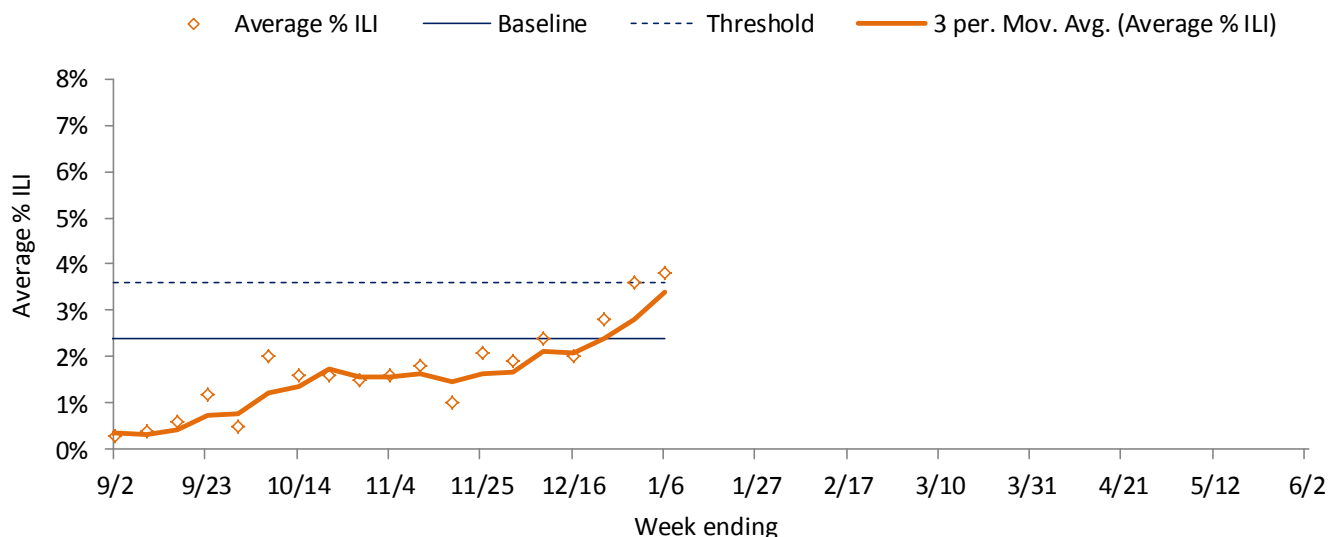
Respiratory virus	Tested	Positive (n)	Positive (%)	CoV 229E	CoV OC43	CoV NL63	CoV HKU1
Coronavirus (CoV)	495	38	7.7%	0	8	26	4

Respiratory virus	Tested	Positive (n)	Positive (%)
RSV	1528	216	14.1%
Human metapneumovirus	1021	38	3.7%
Rhino-enterovirus	892	434	4.8%
Adenovirus	495	3	0.6%

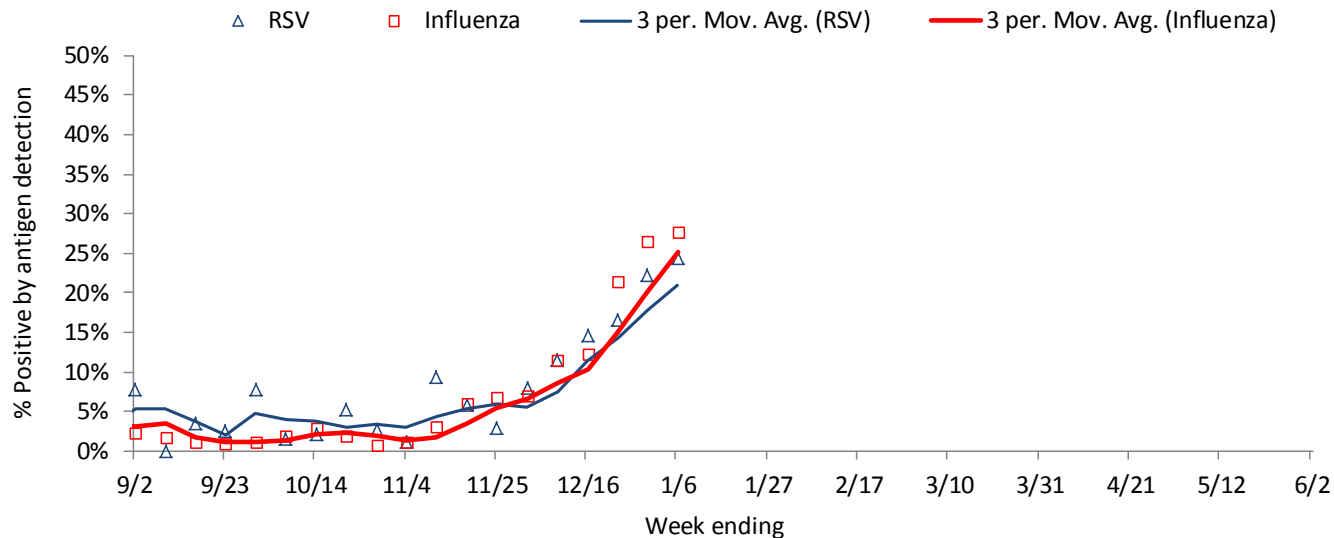
# WISCONSIN STATE SUMMARY

Influenza rapid antigen tests					RSV rapid antigen tests			Influenza-like illness (ILI)		
Tested	Positive (n)			% Positive	Tested	Positive (n)	% Positive	ILI %	Baseline	Threshold
	Influenza A	Influenza B	Total							
2340	601	46	647	27.6%	263	64	24.3%	3.8%	2.4%	3.6%

## ILI activity trend analysis

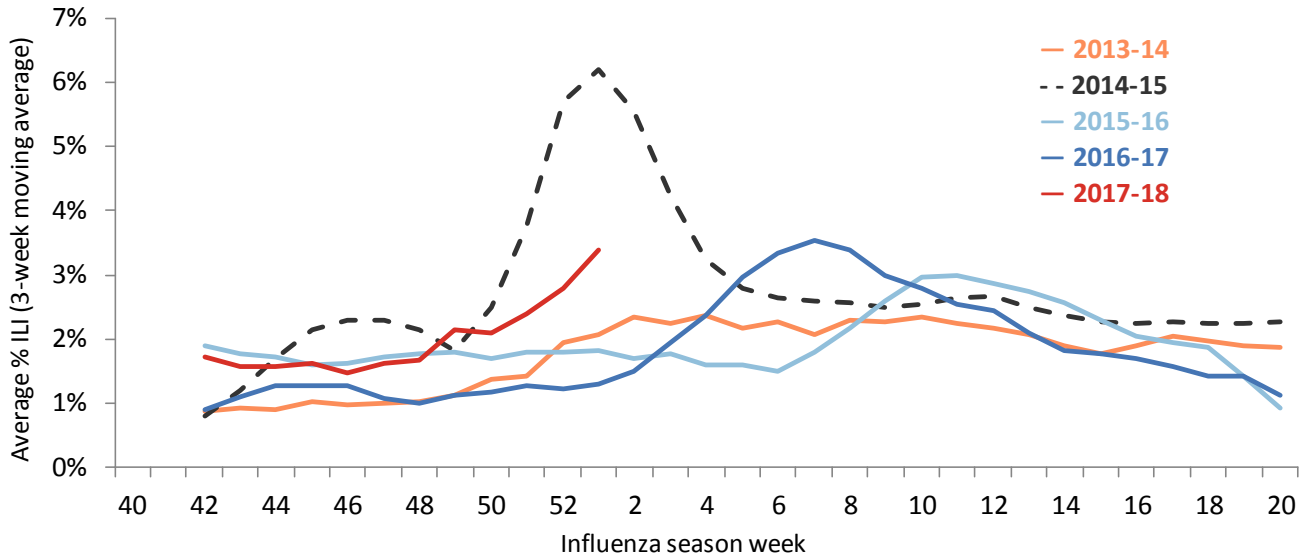


## Influenza and RSV trend analysis



# WISCONSIN STATE SUMMARY

## ILI activity trend analysis by influenza season, Wisconsin

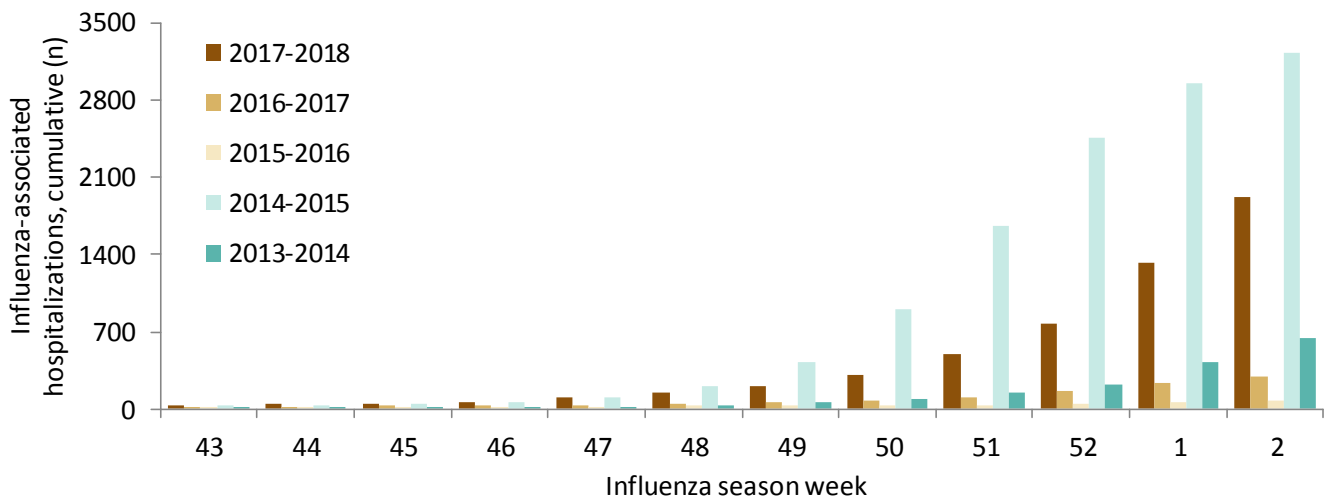


## Influenza-associated hospitalizations, Wisconsin Electronic Disease Surveillance System

September 1, 2017 to present

Age group (years)	Total reported (n)	Influenza subtype					Admitted to ICU	Required mechanical ventilation	Pregnant	Postpartum (≤6 weeks)
		A (2009 H1N1)	A (H3N2)	A (Unknown)	B	Not reported				
<1	17	0	3	14	2	7	3	1	0	0
1-4	26	0	1	18	1	6	3	1	0	0
5-17	26	0	2	13	0	2	4	0	0	0
18-49	188	6	16	135	9	22	31	6	12	1
50-64	344	12	61	240	13	18	54	20	0	0
65+	1312	15	203	974	58	62	149	33	0	0
<b>Total</b>	<b>1913</b>	<b>33</b>	<b>286</b>	<b>1394</b>	<b>83</b>	<b>117</b>	<b>244</b>	<b>61</b>	<b>12</b>	<b>1</b>

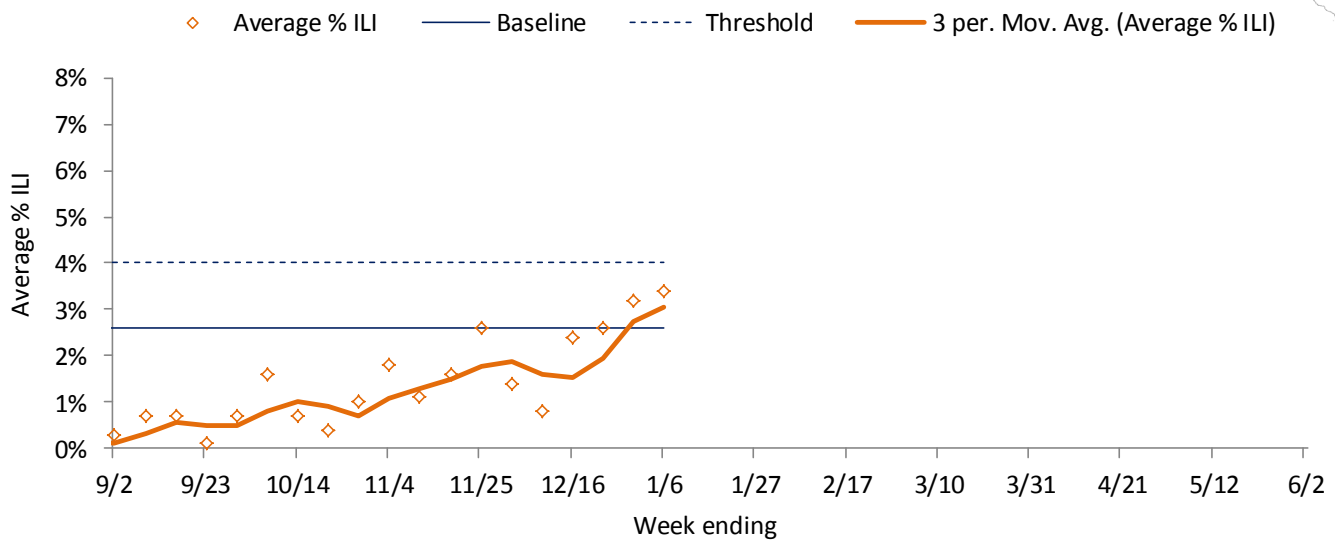
## Reported cumulative influenza-associated hospitalizations by influenza season, Wisconsin



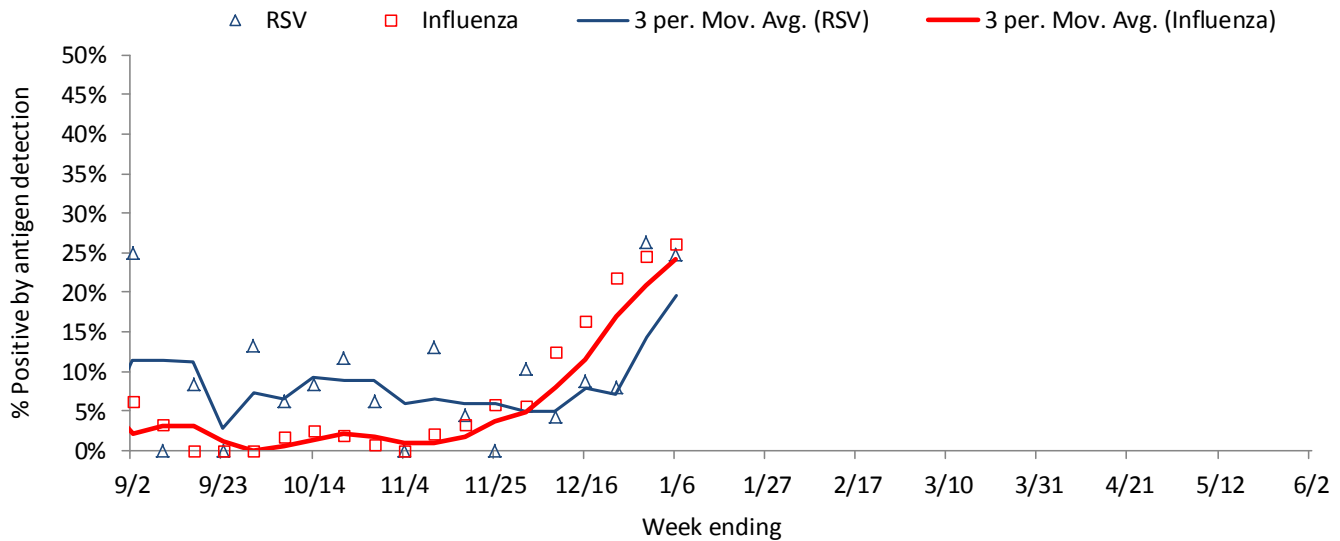
# NORTHEASTERN REGION

Influenza rapid antigen tests					RSV rapid antigen tests			Influenza-like illness (ILI)		
Tested	Positive (n)			% Positive	Tested	Positive (n)	% Positive	ILI %	Baseline	Threshold
	Influenza A	Influenza B	Total							
783	200	5	205	26.2%	101	25	24.8%	3.4%	2.6%	4.0%

## ILI activity trend analysis



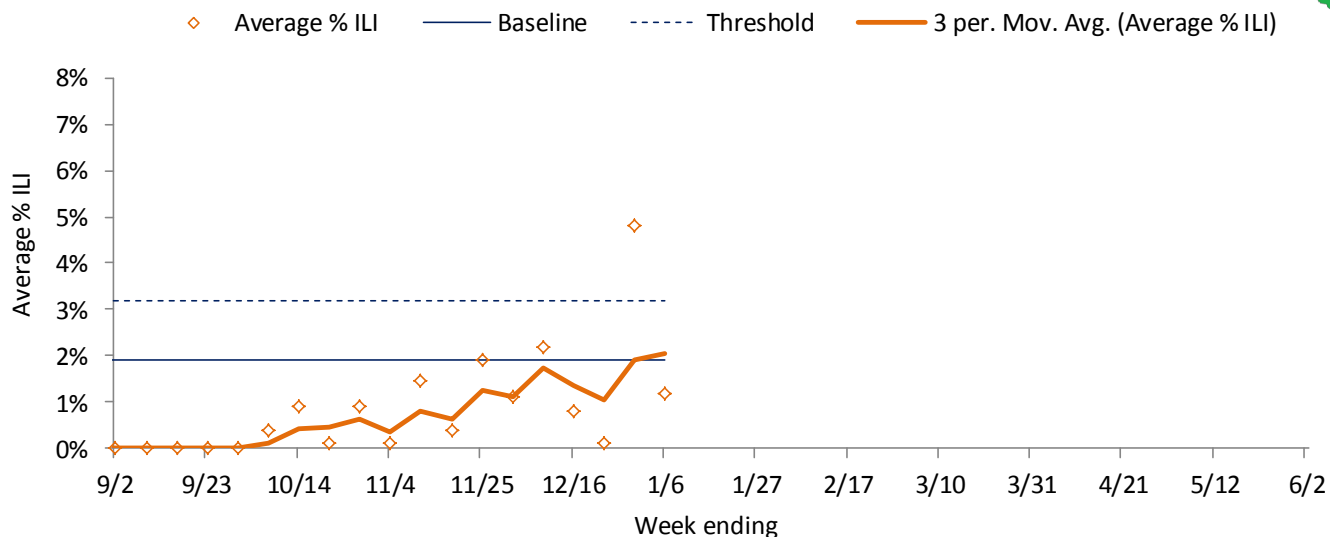
## Influenza and RSV trend analysis



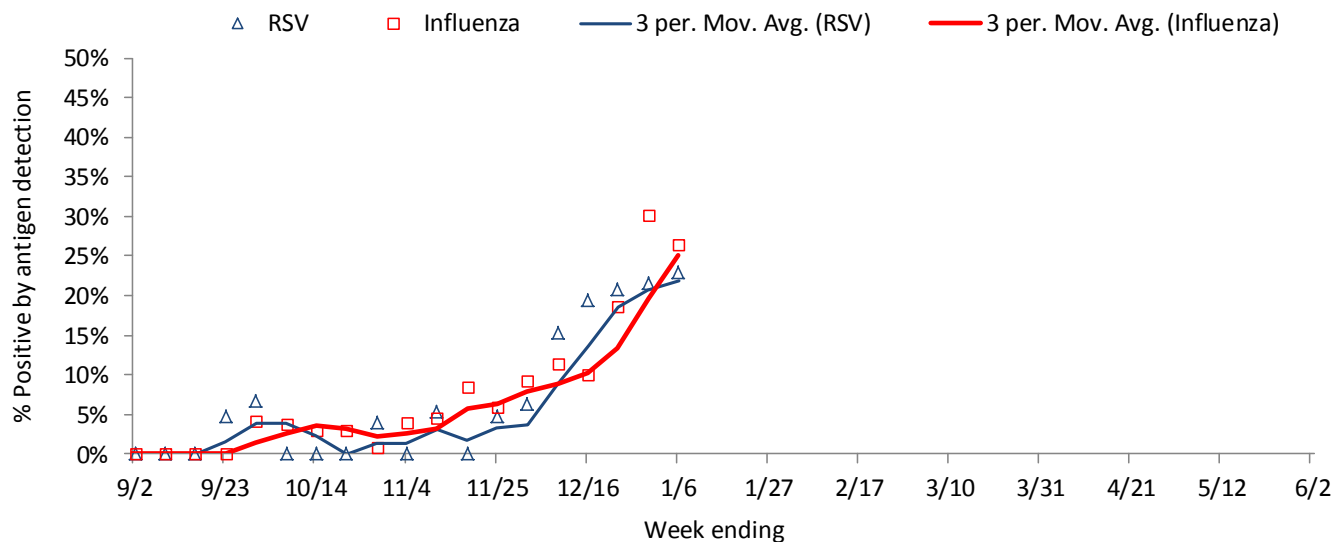
# NORTHWESTERN REGION

Influenza rapid antigen tests					RSV rapid antigen tests			Influenza-like illness (ILI)		
Tested	Positive (n)			% Positive	Tested	Positive (n)	% Positive	ILI %	Baseline	Threshold
	Influenza A	Influenza B	Total							
628	149	17	166	26.4%	83	19	22.9%	1.2%	1.9%	3.2%

## ILI activity trend analysis



## Influenza and RSV trend analysis

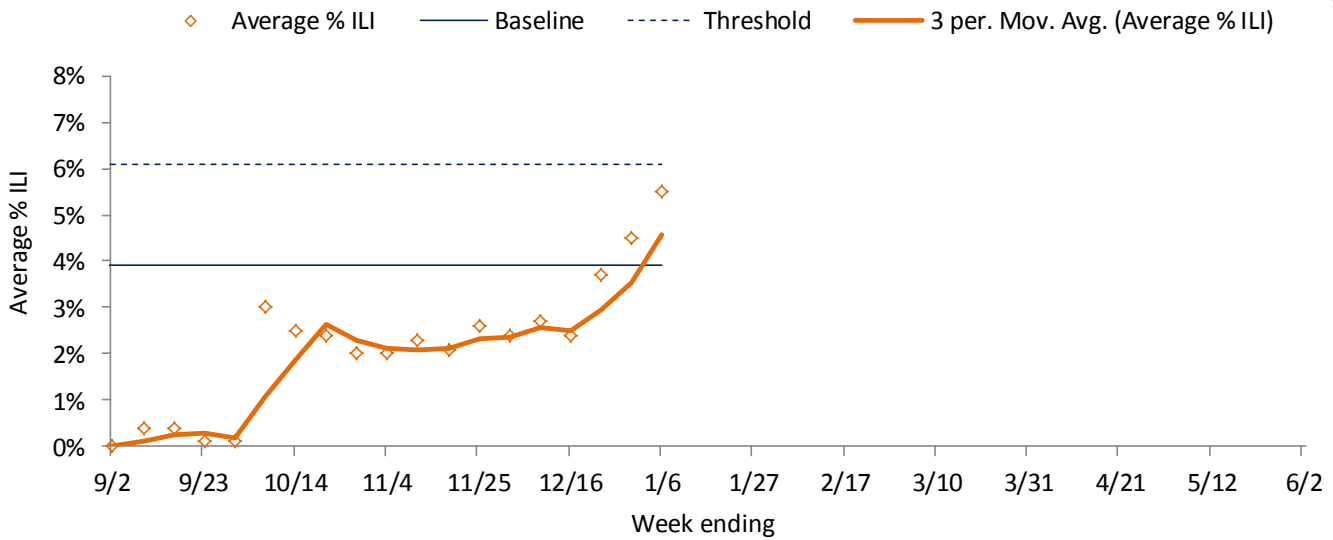




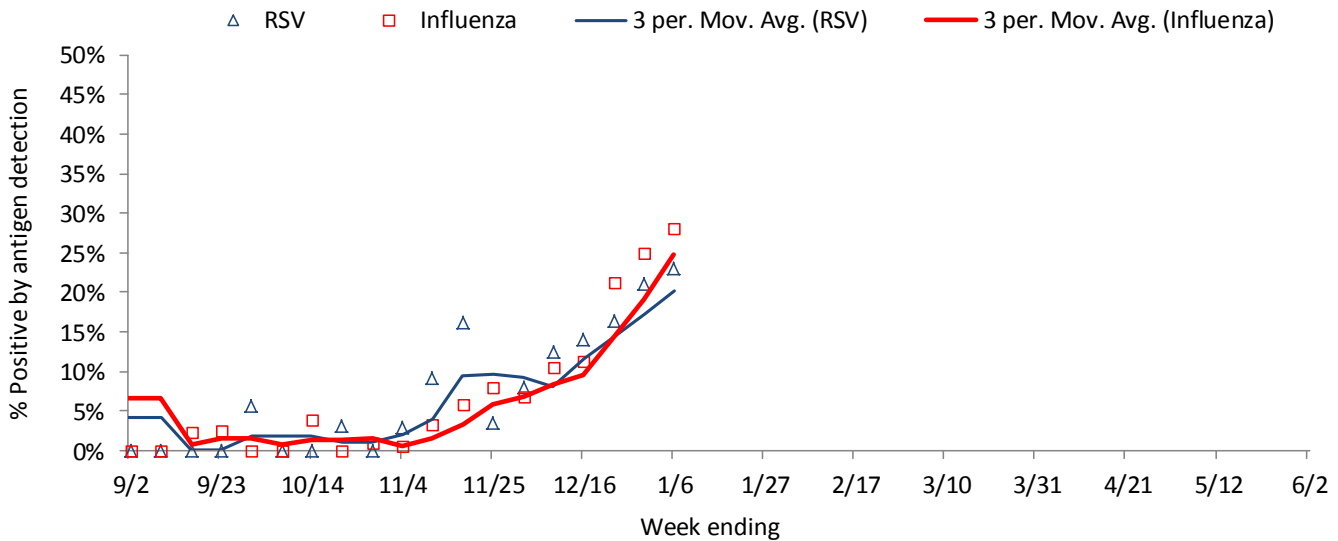
# SOUTHEASTERN REGION

Influenza rapid antigen tests					RSV rapid antigen tests			Influenza-like illness (ILI)		
Tested	Positive (n)			% Positive	Tested	Positive (n)	% Positive	ILI %	Baseline	Threshold
	Influenza A	Influenza B	Total							
827	212	21	233	28.2%	74	17	23.0%	5.5%	3.9%	6.1%

## ILI activity trend analysis



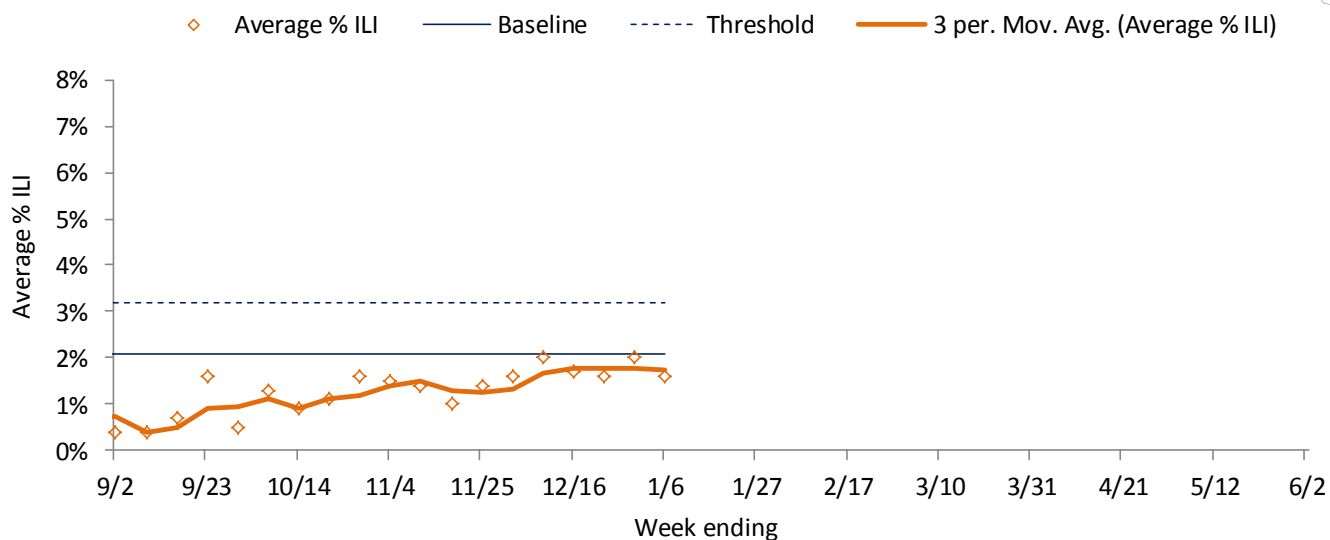
## Influenza and RSV trend analysis



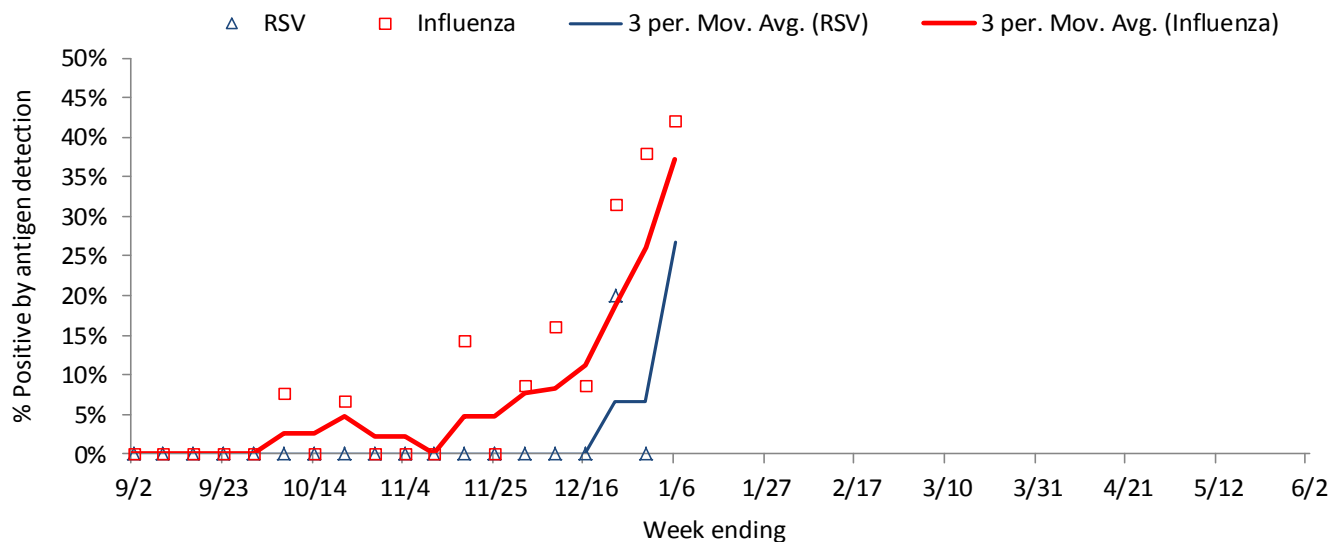
# SOUTHERN REGION

Influenza rapid antigen tests					RSV rapid antigen tests			Influenza-like illness (ILI)		
Tested	Positive (n)			% Positive	Tested	Positive (n)	% Positive	ILI %	Baseline	Threshold
	Influenza A	Influenza B	Total							
102	40	3	43	42.2%	5	3	60.0%	1.6%	2.1%	3.2%

## ILI activity trend analysis

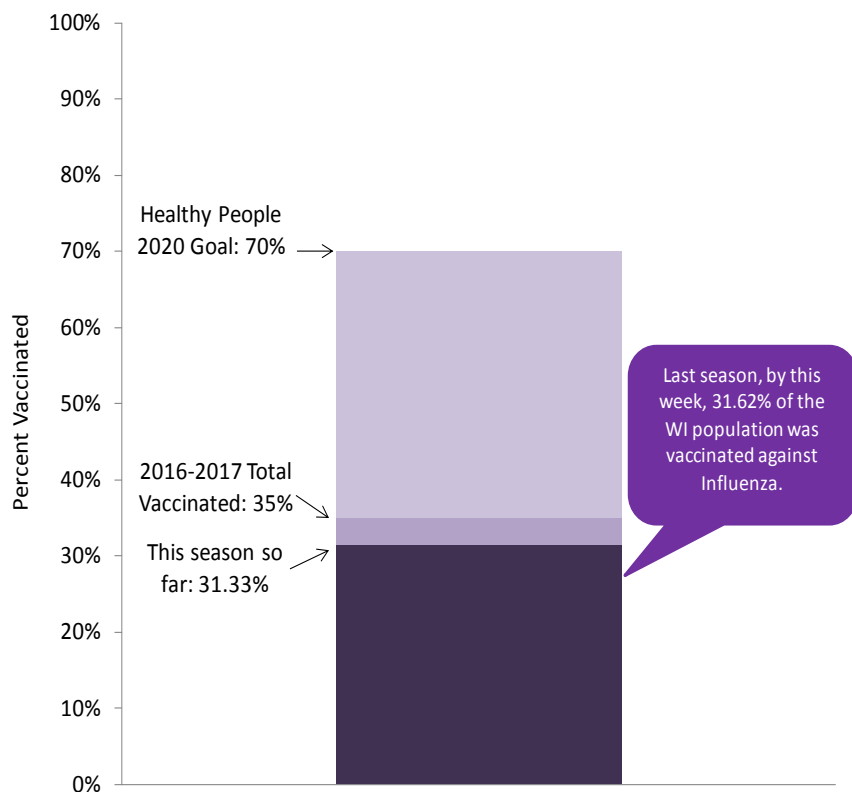


## Influenza and RSV trend analysis



# SEASONAL INFLUENZA VACCINATION

Cumulative percentage of Wisconsin residents who received 1 or more doses of influenza vaccine, 2017-2018 influenza season



Data source: All influenza vaccination rates presented were calculated using data from the Wisconsin Immunization Registry (numerator) and Wisconsin population estimates (denominator).

## Influenza vaccine composition 2017-2018:

The **trivalent** vaccines for use in the 2017-2018 influenza season contain the following:

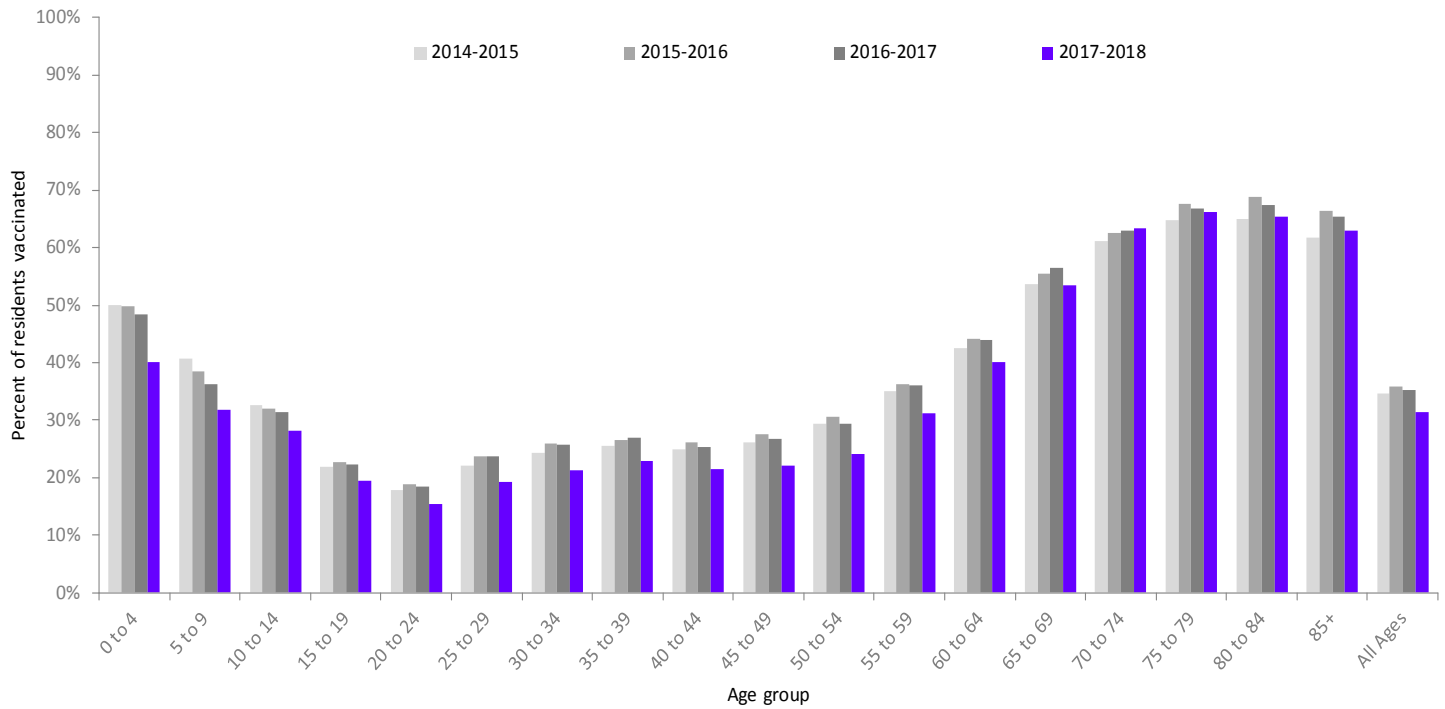
- A/Michigan/45/2015 (H1N1)pdm09-like virus
- A/Hong Kong/4801/2014 (H3N2)-like virus
- B/Brisbane/60/2008-like virus (B/Victoria lineage)

It is recommended that **quadrivalent** vaccines containing two influenza B viruses contain the above three viruses and:

- B/Phuket/3073/2013-like virus (B/Yamagata lineage)

# SEASONAL INFLUENZA VACCINATION

Percentage of Wisconsin residents who received one or more doses of influenza vaccine, by age group and influenza season



Percentage of Wisconsin residents who received one or more doses of influenza vaccine, by race and ethnicity and region, 2017-2018 influenza season

